

Chef Pepin

INSTRUCTION MANUAL



JUICE EXTRACTOR

**MODEL:
CH48885**

IMPORTANT SAFEGUARDS

1. Do not push produce into the feed Chute with your fingers. Always use the Food Pusher provided.
2. Do not touch the small cutting blades in the base of the Stainless Steel Filter Basket.
3. Do not leave the Juice Extractor unattended when in use. Close supervision is necessary when this appliance is being used near children. Do not allow children to use this appliance.
4. Always make sure the Juice Extractor is properly and completely assembled before operating. The unit will not turn 'ON' unless properly assembled.
5. Always use the Juice Extractor on a dry, level surface.
6. Always turn the Juice Extractor off then turn off at the power point before disconnecting from the power outlet when not in use or when assembling.
7. Regularly inspect the supply cord, plug and actual appliance for any damage. If found damaged in anyway, immediately cease use of the appliance and return the entire appliance to the nearest Service Centre for examination, replacement or repair.
8. Do not immerse power cord or motor base in water or any other liquid.
9. Do not leave the appliance unattended when in use. Close supervision is necessary when this appliance is near children.
10. This appliance is not intended for use by young children or infirm persons without supervision.
11. Do not operate any electrical appliance with a damaged cord or plug or after the appliance has malfunctioned or been damaged in any manner. Return the appliance to the nearest authorized Service Centre for examination, adjustment or repair.
12. Do not let the cord hang over the edge of a table or counter, or touch hot surfaces or become knotted.

13. Do not place this appliance on or near a hot gas or electric burner, or where it could touch a heated oven.
14. Always turn 'OFF' at the power point and remove cord – if the appliance is left unattended, - if not in use, - before cleaning, - before attempting to move the appliance.
15. Any maintenance other than cleaning should be performed at an authorized Service Centre.
16. This appliance is for household use only.
17. Do not use the appliance if the rotating sieve is damaged.



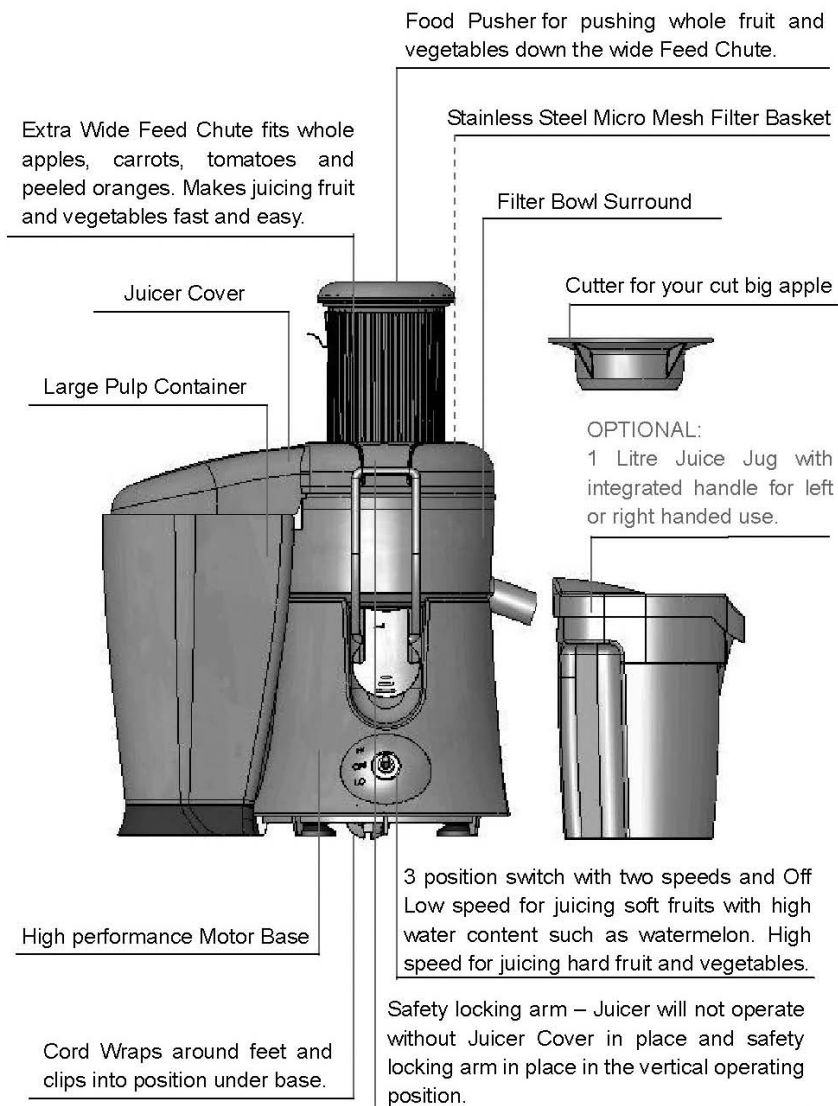
When using the juice extractor on high speed, do not run the juicer for longer than 3 minutes at time when continuously juicing hard fruits and vegetables, such as apples, carrots, and beetroot. After such time, wait 1 minute before resuming feeding fruits and the juicer off.



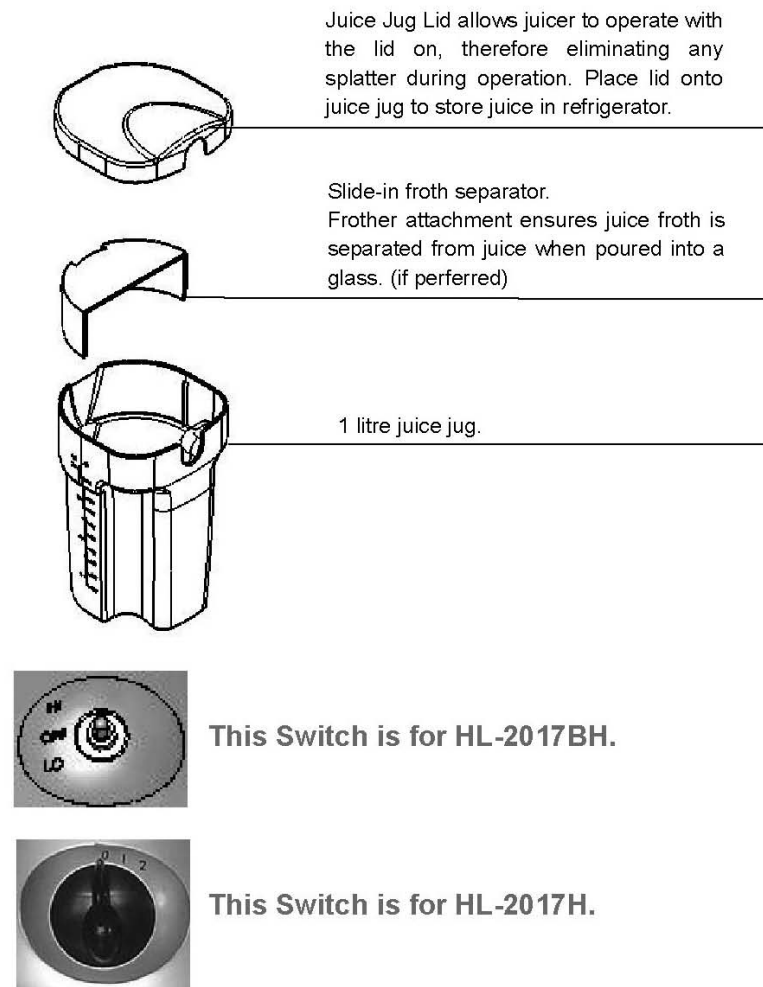
Extra wide feed chute. Do not place hands or foreign objects down feed chute. Always use the food pusher provided.

SAVE THESE INSTRUCTIONS

KNOW YOUR JUICE EXTRACTOR



JUICE JUG (OPTIONAL)



Note: To have froth in the juice simply remove the slide-in froth separator attachment before juicing.

ASSEMBLING

STEP 1.

Place Filter Bowl Surround on top of the Motor Base.



STEP 2.

Press the filter basket on the motor drive coupling and push down until it clicks into place. Ensure the Stainless Steel Filter Basket is fitted securely inside the Filter Bowl Surround an onto the Motor Base.



STEP 3.

Place the Juicer Cover over the Filter Bowl Surround, positioning the Feed Chute over the Stainless Steel Filter Basket and lower into position.



STEP 4.

Raise the Safety Locking Arm up and locate into the two grooves on either side of the Juice Cover. The Safety Locking Arm should now be in a vertical position and locked into place on top of the Juice Cover.

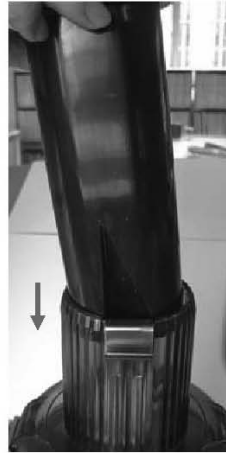


STEP 5.

Slide the Food Pusher down the Feed Chute by aligning the groove in the Food Pusher with the small protrusion on the inside of the top of the Feed Tube.



Continue to slide the food pusher down the feed chute.



STEP 6.

Place the Pulp Container into position by tilting slightly.

Hint:

To minimize washing up we suggest you place a plastic freezer bag (or plastic grocery bag) into the pulp container to collect the pulp.



STEP 7.

Place the juice jug provided under the spout on the right hand side of the Juice Extractor. The lid can be placed on to avoid any splatter.

Note: A glass could also be used to collect the juice.



OPERATING YOUR JUICE EXTRACTOR

STEP 1.

Wash your selection of fruit and vegetables ready for juicing.

Note: Most fruit and vegetables such as apples, carrots and cucumbers will not need to be cut to size as these will fit into the feed chute whole.

When juicing carrots place the tip of the carrot into the feed chute last.

STEP 2.

Ensure the Juice Extractor is correctly assembled. Ensure the stainless steel filter is thoroughly cleaned before each use (refer to care and cleaning). Ensure you place the juice jug (or a glass) under the spout before commencing juicing.

STEP 3.

Plug the power cord into a power outlet and turn the power 'On'. Push the Two Speed switch either for low speed or for high speed depending on the type of fruit or vegetable being juiced. Use the speed selector table as a guide for juicing different fruits and vegetables.

SPEED SELECTOR TABLE	
Apples	High
Apricots (stone removed)	Low
Beetroot	High
Blueberries	Low
Broccoli	Low
Brussels sprouts	High
Cabbage	Low
Carrots	High
Cauliflower	Low
Celery	High
Cucumber	Low
Fennel	High
Grapes(seedless)	Low
Kiwi fruit	Low
Mangoes	Low
Melons	Low
Nectarines(stone removed)	Low
Oranges(peeled)	High or Low
Peaches(stone removed)	Low
Pears	High for hard or Low for soft
Pineapple(peeled)	High
Plums(stone removed)	Low
Raspberries	Low
Tomatoes	Low
Watermelon	Low

STEP 4.

With the motor running, place food into the Feed Chute. Using the Food Pusher, gently guide food down the Feed Chute. To extract the maximum amount of juice, always push the Food Pusher down slowly.



NOTE!!

Do not allow the Pulp Container to overflow as this may prevent correct operation or damage the unit.



HINT:

TO MINIMIZE WASHING UP
PLACE A PLSTIC FREEZER BAG
INTO THE PULP CONTAINER TO
COLLECT THE PULP.

STEP 5.

Juice will flow into the juice jug and the separated pulp will accumulate in the Pulp Container.

NOTE!!

The Pulp Container can be emptied during juicing by turning the Juice Extractor "OFF" and then carefully removing the Pulp Container. (Replace empty Pulp Container before continuing to juice).

DISASSEMBLING

STEP 1.

Turn off Juice Extractor and unplug.

STEP 2.

Remove the Pulp Container by holding it and pivoting the bottom of the pulp container away from the juicer.



STEP 3.

Place both hands on either side of the Locking Arm and pull up and lift over the grooves on either side of the Juice Cover.



STEP 4.

Move the Locking Arm down.



STEP 5.

Lift the Juice Cover off the Juicer.



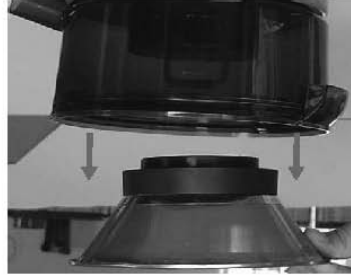
STEP 6.

To remove Stainless Steel Filter Basket, hold base of juicer and pull up Filter Bowl Surround by the juice spout. Lift off the Filter Bowl Surround with the Stainless Steel Filter Basket still in place.



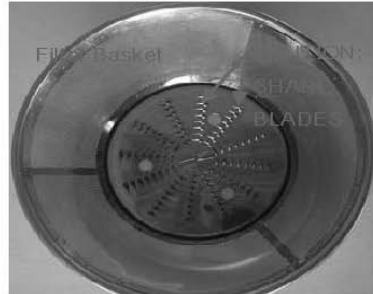
STEP 7.

To remove the Stainless Steel Filter Basket, turn the Filter Bowl Surround upside down and carefully remove the Filter Basket.



NOTE:

THE STAINLESS STEEL FILTER BASKET CONTAINS SMALL SHARP BLADES TO CUT AND PROCESS FRUITS AND VEGETABLES. DO NOT TOUCH BLADES WHEN HANDLING THE FILTER BASKET.



CARE AND CLEANING

- For easy cleaning – immediately after each use rinse removable parts under running water (to remove wet pulp). Allow parts to air dry.
- Wipe the Motor Base with a damp cloth.
- Before washing Juice Jug, remove froth attachment and rinse under running water.
- For consistent juicing results always ensure that the stainless steel filter basket is thoroughly cleaned using the supplied nylon brush. Using the nylon washing up brush, hold the Filter basket under running water and brush from the inside of the basket to outer rim. After cleaning the filter basket, hold it up towards a light to ensure the fine mesh holes are not blocked. If the holes are blocked soak the Filter Basket in hot water with 10% lemon juice to loosen the blocked holes.
- Do not soak the Stainless Steel Filter Basket in bleach.
- Always treat the Filter Basket with care as it can be easily damaged.
- Discolouration of the plastic may occur with strongly coloured fruit and vegetables. To help prevent this, wash parts immediately after use.
- If discolouration does occur, the plastic parts can be soaked in 10% lemon juice and water or they can be cleaned with a non abrasive cleaner.
- To assist with cleaning soak the Stainless Steel Filter Basket in hot soapy water for approximately 10 minutes immediately after juicing is completed. If pulp is left to dry on the filter it may clog the fine pores of the filter mesh thereby lessening the effectiveness of the Juicer.
- For your convenience a nylon cleaning brush has been included with your Juice Extractor.

NOTE:

- **Do not immerse the Motor Base in water or any other liquid.**
- **The centre of the Filter Basket and Feed Chute contain small sharp blades to process fruit and vegetables during the juicing function. Do not touch blades when handling the Filter Basket or Feed Chute.**

PRODUCT CARE NOTICE

For your convenience a nylon cleaning brush has been included with your Juice Fountain.

Please ensure that the **Stainless Steel Filter Basket** is thoroughly cleaned after each use.

The stainless steel filter can be soaked in hot soapy water immediately after juicing and before cleaning with the nylon brush.

If fruit & vegetable pulp is left to dry on the stainless steel filter it will become clogged thereby lessening the effectiveness of the juicer.

Always treat the filter basket with care as the filter can be easily damaged.

